

Mini type 4E1-1*10/100BaseT Ethernet converter

Model:BD-4E1-ETH

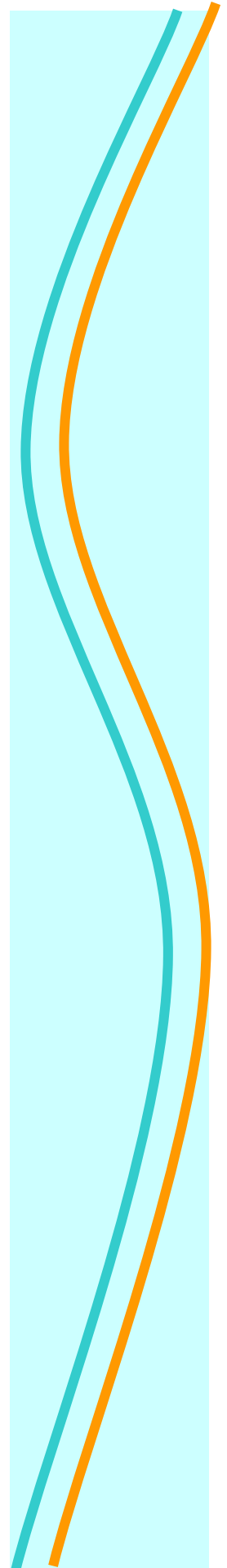


Functions

4E1-10/100BT serial interface converter used back multiplexing technology, transfer 10M/100M Ethernet data by using multi E1 channels. Realize convert between 1 to 4 E1 channels and Ethernet interface. It can transmit signal of E1 channel to RJ45 interface point to point, realize the connection of E1 channel and Ethernet. It different from normal bridge , supporting 1 to 4 E1 channels customized configuration, auto detecting the number of E1 channels and use the available E1, allow some limiting transfer delay between different E1 channels. Single line speed is 2048Kbits/s, 4 channels can up to 8192Kbits/s. it can connect with Ethernet switch or hub when in 10/100Mbps full/half duplex mode, make use of mass E1 resource in telecommunication networks to expend the transfer distance and application field of Ethernet, is a suitable solution for broadband switch in of Ethernet. It can used in fields such as connecting LANs, connecting end offices, VOD, remote monitor, E1 interface of switches, etc.

Features

- ✧ Realize transparent transfer Ethernet data in 1 to 4 E1 channels
- ✧ 10M/100M Ethernet, full/half duplex auto-negotiate.
- ✧ Ethernet support AUTO-MDIX(cross over and straight through self adapt)
- ✧ setting CRC alarm limitation to auto isolate lines with low transfer quality, single direction. When one direction error rate over limitation, disconnect only one direction, the other is not affected. Unbalance in two directions.
- ✧ Allow 4 E1 channels up to 10ms transfer delay. when the delay over the limitation, can stop transfer automatically.
- ✧ Having 2 loop back functions: E1 local loop, E1 external loop.
- ✧ Support Dynamic Ethernet MAC address(4096), having local address filter function.
- ✧ E1 interface compatible with ITU-T G.703,G.704,and G.823. signaling slot not supported.
- ✧ E1 interface having internal clock resume circuit and HDB3 code circuit.
- ✧ support E1 channel hot plug, and auto detect available E1 channels not pause the transmission.
- ✧ supporting 1 to 4 E1 channels customized configuration, auto detect the number of E1 channels and select the available E1 at reset.
- ✧ E1 Support 75Ω/unbalance impedance or 120Ω/balance for order
- ✧ support reset remote system from local system.
- ✧ having Ethernet monitor auto reset function.
- ✧ In case of disappearing of one E1 in equipments 4E1, it should be occurred the balancing of traffic and the channel should be kept.





Mini type 120ohm

E1 Interface

- Line Rate: 2.048Mbps±50ppm
- Line Code : HDB3
- Interface Standard: ITU-T G.703
- E1 Impedance: 75Ω(unbalance) or 120Ω(balance)
- Connections : dual coax BNC and 120-ohm twisted-pair (RJ45)
- Jitter tolerance : finer than G.742 and G.823

10/100Base-T Interface

Rate: 10/100M, full/duplex auto-negotiation
 Protocol: Support IEEE 802.3
 MAC Address Entries: 4096 Entries
 Physical interface: RJ45, support AUTO-MDIX

Power supply

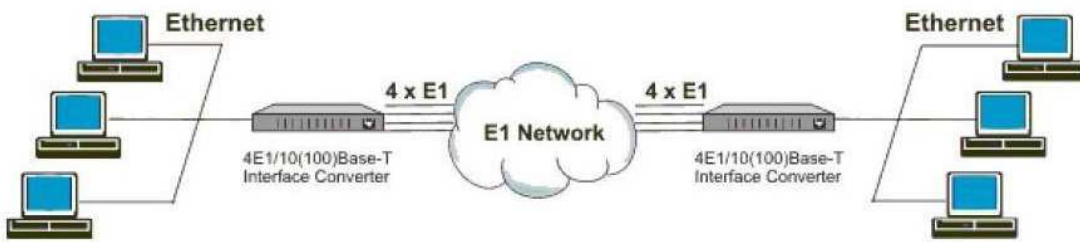
working voltage range wide, good anti-disturb and Isolation, work stable
 option I – DC-48V,range DC-36V~DC-72C
 option II – AC220V,range AC165V~AC240V

Power Consumption: <=3 Watts

environment condition

Operating temperature: 0C~+50 C
 Storage temperature: -20 C~+70 C
 Relative temperature:95% (uncondensed)

Application



Application Diagram of 4E1/10(100)Base-T Interface Converter

Order information:

BD-4E1-ETH/75	4E1 to Ethernet converter,75ohm(BNC connector), 10/100M ethernet,standalone Mini stype,power AC220V or DC48V
BD-4E1-ETH/120	4E1 to Ethernet converter,120ohm(RJ45 connector),10/100M ethernet,standalone Mini stype,power AC220V or DC48V

Azmoon Keyfiat Co. Head Office:

3F, No.3, 19th Alley Gandhi. Ave 15178 Tehran-IRAN

Tel: +98-21-84218

Fax: +98-21-88676919

Email: azmoon@teta.net

Http: // www.azmoon-co.com